

The Morgan School

Profile 2020-2021
CEEB Code 070-105

The mission of the Clinton Public Schools is to empower learners to embrace and influence the future with courage and compassion.



Strategic Priorities

As a Professional Learning Community, we will:

1. Provide personalized learning opportunities to develop engaged and reflective learners who can apply their learning.
2. Ensure academic achievement and learning for all students in all disciplines.
3. Develop a school community focused on establishing relationships and providing supports that foster the health and well-being of all.
4. Communicate and promote understanding of the district mission and strategic priorities among all stakeholders.
5. Provide and maintain district resources in a manner that maximizes efficiencies, ensures accountability, and supports the learning and development of all students.

71 Killingworth Turnpike, Clinton CT, 06413

860.664.6504 or 860.664.6544 (Guidance)

www.clintonpublic.net

Maryann O'Donnell, Superintendent
 Marco Famiglietti, Asst. Superintendent
 Keri Hagness, Principal
 Christopher Luther, Asst. Principal

Mya Rodowicz, School Counselor, Chairperson
 Joni Zdunczyk, School Counselor
 Moheba Sayed, School Counselor
 Christie Williams-Kahn, School Counselor
 Janet Theiler, Support Center Secretary

The Morgan School and Community

The Morgan School is the public high school of Clinton, Connecticut, a town of approximately 15,000, located on Long Island Sound. Clinton is influenced by the close proximity of cultural centers. Moreover, its varied, but moderate, economic resources help create a student body that is diverse in its beliefs, attitudes, and aspirations.

The Morgan School cultivates intellect and character in partnership with families and the community. Students learn in a rigorous academic and student-centered environment that prepares them to become resourceful, productive, healthy citizens in a global society.

Grading

A	B	C	D	F
90-100	80-89	70-79	60-69	below 60

GPA Calculation To A 4.0 Scale

$$(GPA \times 4) / 65 = GPA \text{ on } 4.0 \text{ Scale}$$

Class Rank

Rank is calculated cumulatively at the end of 6 semesters and again at the end of 7 semesters.



Type	Public
Accreditation	Connecticut State Department of Education and New England Association of Schools and Colleges
Enrollment	Seniors: 136 Students Grades 9-12: 568 Students
Faculty	Teachers: 49.2 Paraprofessionals: 12 Support Staff: 7.8 Administrators: 2
Average Class Size of Core Classes	20 Students

The Curriculum

The Morgan School offers a variety of core academic courses as well as electives at varying levels to accommodate all types of learners. Students are permitted and encouraged to take as many advanced level courses as possible, and may take a combination of levels in order to receive their Morgan School diploma.

Leveling

AP/ECE	Highest academic rigor Potential to earn college credit
H Honors	Most academically challenging without potential of college credit
L1	Upper college preparatory level
L2	Mid-level college preparatory
L3	Career Preparatory

Graduation Requirements

English	4
Math	3
Science	2
Social Studies	3
Freshman Course	.5
Art/Voc. Ed.	1
Physical Ed.	1
Health	.5
Business/Tech.	1
Electives	7

Total Credits for Graduation 23

Honors Diploma

Students who complete the four-year sequence will receive a Morgan School Honors Diploma and recognition in the Commencement Program and Commencement Attire. Students must take a total of 4 AP/ECE courses by graduation, and maintain a C or better in all courses to receive an Honors Diploma.

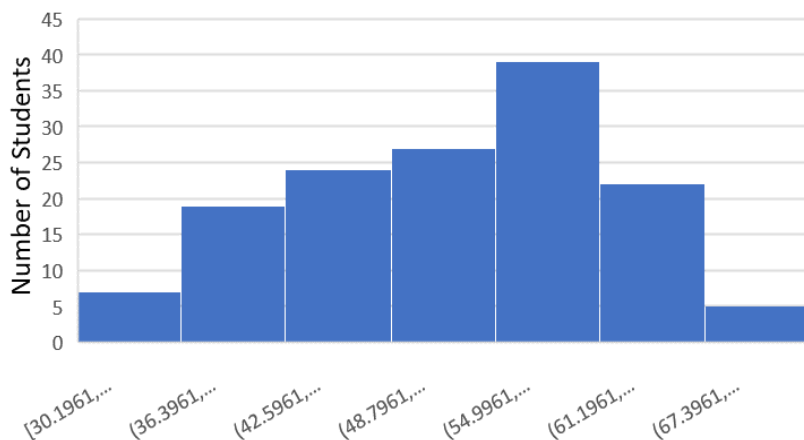
Grade 9
 Honors English I
 Honors Algebra/Geometry
 Honors Biology
 Honors U.S. History
 World Language at Highest Level Offered

Grade 10
 Honors English II
 Honors Geometry/Algebra II
 Honors Chemistry
 Honors World History
 World Language at Highest Level Offered

Grade 11
 AP English Lang. & Comp.
 Honors Algebra II/Pre-Calculus
 AP Biology or AP Environmental
 AP Government and Politics
 World Language at Highest Level Offered

Grade 12
 UCONN ENG 1011: Writing Through Lit.
 Honors Pre-Calculus/Calculus
 Honors Humanities

Class of 2020 Weighted GPA



Advanced Academic Opportunities

English
 Honors English I
 Honors English II
 Honors Humanities
 English III Honors/AP English Lang. & Comp
 UCONN ENG 1011: Writing Through Literature

Math
 Honors Algebra I
 Honors Geometry
 Honors Algebra II
 Honors Pre-Calculus
 ECE Probability & Statistics
 AP Calculus

Science
 Honors Biology
 Honors Chemistry
 AP Physics I
 ECE Anatomy & Physiology
 ECE Environmental Science
 AP Biology
 ECE Marine Science

Social Studies
 Honors US History
 Honors World History
 AP European History
 AP U.S. Government and Politics
 Honors Philosophy

World Language
 Honors French II
 Honors French III
 Honors French IV
 Advanced French
 Honors Spanish II
 Honors Spanish III
 Honors Spanish IV
 AP Spanish

2019-2020 SAT Scores

	Mean Score	Reading & Writing	Math
CT Public Schools	1092	553	540
Class of 2020	1083	560	523

2019 –2020 ACT Scores

	Math	Science	English	Reading
College Readiness	22	23	18	22
2020 District Scores	23	24	25	26

Class of 2020

151 Number in Class

100% of Students Polled

105 Entered 4 Year Colleges

14 Entered 2 Year Colleges

1 Non U.S. College

16 Employment

3 Gap Year

3 Other (Strive)

3 Military

6 Undecided/No Plans

Universities and Colleges Accepting Graduates of the Classes of 2019 & 2020

Adelphi University
 Albertus Magnus College
 Baylor University
 Bowdoin College
 Bridgewater State University
 Bryant University
 California University of PA
 Castleton University
 Central Connecticut State University
 Chapman University
 Clemson University
 College of the Holy Cross
 Connecticut College
 Culinary Institute of America
 CUNY Queensborough Community College
 Curry College
 Eastern Connecticut State University
 Eckerd College
 Emerson College
 Endicott College
 Flagler College-St Augustine
 Fordham University
 Franklin Pierce University
 Full Sail University
 Gateway Community College
 George Mason University
 George Washington University
 High Point University
 Hollins University
 Husson University
 James Madison University
 Johnson & Wales University, Providence

Keene State College
 Lasell University
 Louisiana State University
 Loyola University New Orleans
 Maine College of Art
 Manchester Community College
 Manhattan College
 Massachusetts College of Art and Design
 Middlesex Community College
 Middlesex Community College
 Mitchell College
 Muhlenberg College
 New York University
 Nichols College
 North Carolina State University at Raleigh
 Ohio University-Main Campus
 Pace University-New York
 Pennsylvania State University-Main Campus
 Plymouth State University
 Porter and Chester Institute
 Post University
 Quinnipiac University
 Rhode Island College
 Roanoke College
 Rochester Institute of Technology
 Roger Williams University
 Sacred Heart University
 Salve Regina University
 Simmons University
 Southern Connecticut State Univ.
 Southern New Hampshire Univ.
 Springfield College

St. John's University
 Suffolk University
 SUNY Maritime College
 The University of Alabama
 Three Rivers Community College
 TIGI Hairdressing Academy
 UCAS
 University of Bridgeport
 University of California, San Diego
 University of California-Santa Cruz
 University of Connecticut
 University of Connecticut-Avery Point
 University of Delaware
 University of Hartford
 University of Maine
 University of Massachusetts Dartmouth
 University of Massachusetts-Amherst
 University of New Hampshire-Main Campus
 University of New Haven
 University of North Carolina, Wilmington
 University of Rhode Island
 University of Saint Joseph
 University of Tampa
 University of Virginia-Main Campus
 Villanova University
 Virginia Commonwealth University
 Wesleyan University
 Western Connecticut State University
 Western New England University
 Wheaton College - Massachusetts
 Worcester Polytechnic Institute
 Yale University